

# OmegaPAT

The most advanced Portable Appliance Tester



## Wide application range

- Enables complete safety verification of a wide range of electrical appliances of **Class I, Class II** and **Class III** appliances.
- Ideally suited for periodical testing, electrical service interventions, and control testing.
- Supports **230 V** and **110 V**.

## Autotest mode for easier and faster testing

- It offers a list of preprogrammed autotest sequences and the possibility to customize your own test procedure.
- Over **4000 Autotests** can be stored into the memory.
- Supports **RFID** and **Barcode labels** for super fast auto-testing.

## High accuracy and safety

- The instrument meets or exceeds the demands of the latest safety and appliance testing standards.
- High accuracy the highest protection of the user and tested appliance during test is guaranteed in all working conditions.

## Easy operation

- High resolution **large graphic display** contains all important information when working with the tester.
- Customized **keypad with jogger** for fast access to all of the functions.
- All the test can be performed without external adapters.
- Fast direct print-out facilities for immediate printing.

## PC Software package PAT Link.

- Perfect tool for documentation, analysis and printing out test reports.

## Robust, waterproof case

- The new Metrel case offers **high protection** even if working in arduous conditions.
- All standard **accessories can fit inside** the case.

*The complete analysis of safety:*

**Visual test**  
**Earth Bond Test**  
**Insulation**  
**Sub Leakage Current**  
**Touch Leakage Current**  
**Differential Leakage Current**  
**Flash Test**  
**Power Test**  
**Polarity (cord) Test**

## Measurements and testing in accordance with:

IEC 60335-1	Household and similar electrical appliances
IEC 60598-1	Luminaries
IEC 60745	Hand-held motor operated tools
IEC 60950	Safety of information technology equipment
VDE 701 T1	Repair and modification inspections
VDE 702 T1	Repeat tests of electrical appliances

## Standard set      Order No. MI 2140



- Instrument OmegaPAT
- Earth Bond Clip
- Flash Test Probe
- Instruction Manual
- Production verification data
- Declaration of warranty
- Declaration of conformity

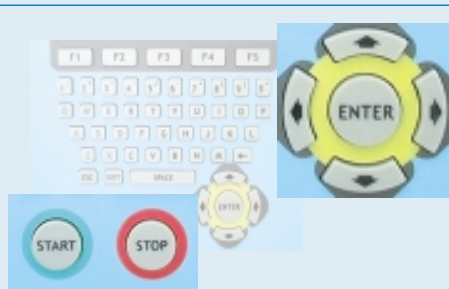
## Key Features



Selection of the appliance type.

Pre-programmed auto test sequences.

Help menus for individual tests.



Clear and easy access to test procedure:  
- select the auto test  
- press START



Multi - input / output ports:

- Bar code reader
- RFID reader / printer
- Printer
- PC

## Technical Specification

### Earth Bond

Test currents: 100 mA, 4 A, 10 A, 25 A  
Measuring range: 0.00 ÷ 19.9 Ω Accuracy: ±(5 % + 5 dig.)

### Insulation

Test voltage: 250 V, 500 V  
Measuring range: 0.000 ÷ 199.9 M Ω Accuracy: ±(5 % + 5 dig.)

### Substitute Leakage

Test voltage: 40 V  
Measuring range: 0.00 ÷ 1.99 mA Accuracy: ±(5 % + 5 dig.)

### Touch Leakage

Measuring range: 0.00 ÷ 19.99 mA Accuracy: ±(5 % + 5 dig.)

### Leakage

Measuring range: 0.00 ÷ 19.99 mA Accuracy: ±(5 % + 5 dig.)

### Power

Measuring range: 0 ÷ 4 kVA Accuracy: ±(5 % + 5 dig.)

### Flash Test

Output voltage: 1500 V / 3000 V  
Measuring range: 0.00 ÷ 2.50 mA Accuracy: ±(5 % + 5 dig.)  
Trip-out function: yes

### Polarity

Output voltage: 40 V  
Faults: Open, Short, Crossed, Multiple fault

**Timer:** All functions, 2 s ÷ 180 s

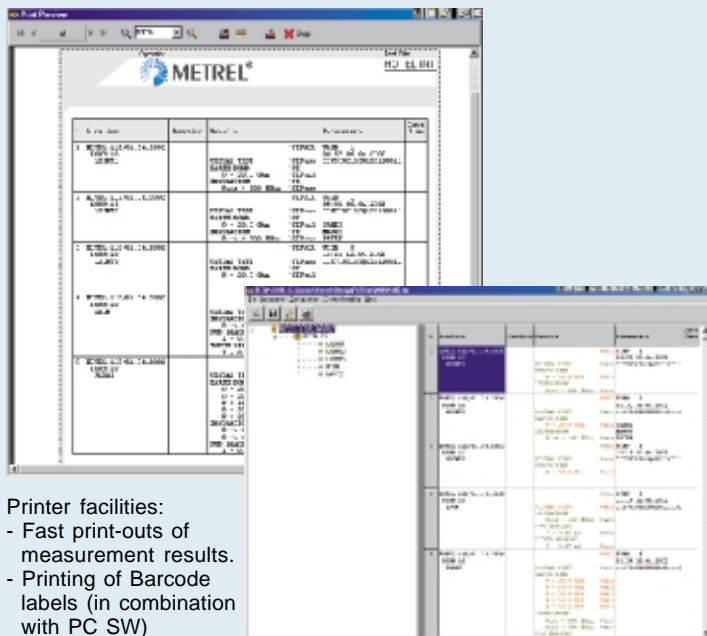
**Limits:** All functions, programmable

## Professional PC SW package, printout facilities

The accompanying professional PC SW package PATLink enables:

- viewing and analysing measurement results,
- storing of results for documentation,
- operating of test reports,
- printing of test reports.

Also available PC SW package simply PATs which supports most common PAT testers



Printer facilities:

- Fast print-outs of measurement results.
- Printing of Barcode labels (in combination with PC SW)



## General Specification

Mains voltage –230 V system  
Mains voltage –115V system  
Max. power consumption

230 V (+6 % - 10 %) / 50 or 60 Hz  
115 V (+6 % - 10 %) / 50 or 60 Hz  
150 VA (without load on TEST SOCKETS)

Display  
RS232 interfaces  
Memories

Graphic, 240 X 128 dots  
Baud rate 115200  
4000 memory locations

Shock proof plastic / portable case  
Dimensions (w × h × d)

335 x 160 x 335 mm

Mass (without accessories)

9 kg

Pollution degree

2

Degree of protection (closed)

IP 54

Overvoltage category

Cat II / 300 V

Protection classification

I

Working temperature range

- 10 ÷ + 50 °C

Protection against overload on test sockets:

yes

Protection against shorted appliances or excessive leakages:

yes

Earthing connection detection:

yes


## Optional accessories

## Order No.:



- Printer **A 1103**
- 110 / 230 V adapter **A 1104**
- Bar Code reader **A 1105**
- Bar Code Labels, 200 pcs **A 1106**
- RFID reader / writer \* **A 1107**
- RFID tags, 50 pcs\* **A 1108**
- OmegaPAT link **A 1109**
- PC SW package Simply PATs\* **A 1110**

\*will follow later in 2002

 **METREL® – Measuring and Regulating Equipment Manufacturer, d.d.**

Horjul 188, 1354 Horjul - SLOVENIA

Tel.: +386 1 755 82 00; Fax: +386 1 754 92 26

Internet: <http://www.metrel.si>; E-mail: [metrel@metrel.si](mailto:metrel@metrel.si)

Distributor: